



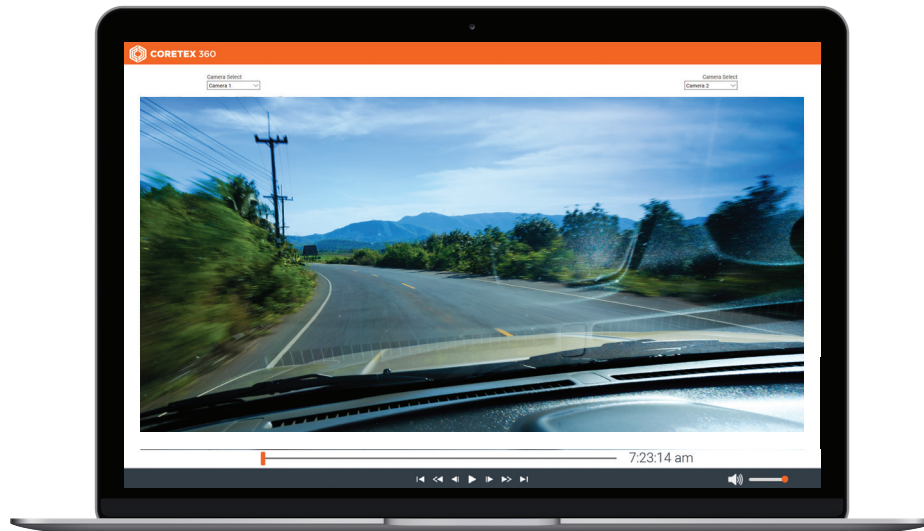
# Video Cameras

**SOLUTION OVERVIEW**

Compliance and safety at your fingertips



# Keep your eyes on the road

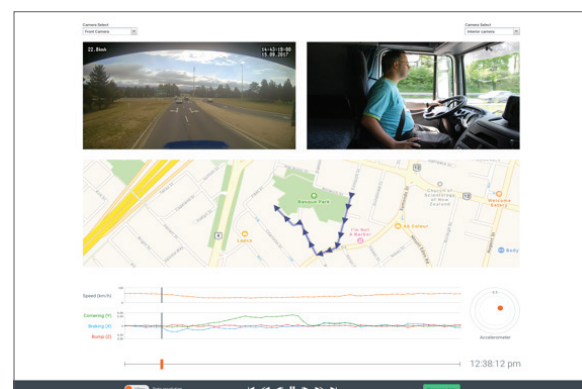


Coretex multi-channel cameras simplify incident resolution, cut accident rates, protect reputation and help put the brakes on insurance costs.

- ✓ HD video records up to eight channels with optional audio, ensuring you don't miss a thing
- ✓ Continuously record up to 68 hours before overwriting, including optional live streaming and the ability to query historical video
- ✓ Automated video uploads on G-force events
- ✓ Driver panic button automatically uploads a video
- ✓ Tamper proof and password protected recordings preserve integrity of information
- ✓ Web based solution for viewing videos and incidents remotely

Our camera solutions can be stand-alone, or part of an integrated Coretex solution.

In stand-alone mode, Coretex 360 associates videos with incidents and displays them online. As an integrated solution, 360 presents video camera feeds alongside other data including EMS, G-force and vehicle speed, providing a context-rich view of events.



## FEATURES

### Coretex camera solutions support

- 720p HD video
- Audio recording
- Live GPS feed (for stand-alone mode)
- Cellular connectivity (3G/4G)
- Local storage of footage on dual SD cards
- Tamper resistant design with key-access to SD cards
- Instant remote retrieval of court admissible evidence
- Automatic upload of triggered events to Coretex 360
- On demand recall of footage based on timestamps
- G-force event or driver initiated recording at 25fps
- Continuous 1fps recording
- Live streaming from cameras directly into Coretex 360
- Four-channel camera options (mirrors, reversing etc.)
- Fully wired solution with video triggered on ignition

### Coretex cameras assist with

- Lack of witnesses
- Cash for cash/staged accidents
- False whiplash claims
- Conflicting reports of actual events
- Driving offenses (speed cameras, red lights)
- Driver coaching/behavior monitoring
- Fatigue management
- Driving complaints

## CAMERA PACKAGES



**VISION / VISION PLUS**  
(1-2 CHANNELS)



**CLEARVIEW**  
(1-4 CHANNELS)



**MAXVIEW**  
(1-8 CHANNELS)

### Camera packages include

- Camera(s)
- Data
- Access to Coretex 360 for viewing camera feeds
- Training

## TECHNICAL SPECIFICATIONS

### Coretex base two-channel camera specifications

Image sensor	Mega-pixel color CMOS sensor
DSP	Standard DSP
Angle of view	170°
Video resolution	1280x720, 640x480, 320x240
Recording speed	Up to 30fps per camera
Recording modes	Normal (Continuous) Event (G-Sensor, Panic, Alarm) Dual (Continuous + Event)
Recording time	Minimum: 1 minute Maximum: 167 hours
Memory	Supports 2 SD Cards of up to 32GB (Class 10)
GPS	Internal GPS
G-Sensor	Internal 3-Axis G-Sensor
RTC	Internal Battery
Buzzer	Recording Start, Error
LED	4 LEDs (Red, Orange, Blue, Green)
PC Software	PC Viewer
Power Input	Cigarette Jack: Input - DC 12V/24V 2A, Output: DC 5V 3A Power Adapter: Input - DC 12V/24V 2A, Output: DC5V 3A Junction Box : Input - DC 12V/24V 2A, Output: DC 5V 3A
Size (W x H x D)	110 x 57 x 57
Weight	0.15kg
Operating temp	-10°C – +55°C

## ADDITIONAL CAMERA OPTIONS

### DRIVER FACING



### FORWARD FACING



### GENERAL PURPOSE EXTERNAL



### SIDE-FACING EXTERNAL



To learn more call  
888 887 0935  
or visit [coretex.com](http://coretex.com)

