



# Putting you in control of your cold chain

## Turn compliance into a competitive advantage with Coretex

### 1 Integrations

Easily connects to your existing business systems from McLeod to TMW, Appian and more.



Integrated software & hardware

### 2 Two Way Commands

Complete reefer control from your desktop or phone. Pre-set mode and temperature for anytime with our batch commands.



Reefer Alerting



Core Temperature Monitoring

### 3 Monitoring

Extensive monitoring, including ABS/EBS, Tyre inflation and sensors for doors, humidity, fuel and more.



Power Management



Reefer Fuel Level



ABS / EBS Monitoring



Door Detection



Two-way Remote Commands



Tire Inflation



Maintenance / Service Manager

# Return on Investment

- 1** Reduce time to investigate incidents

**2** Plan and schedule maintenance

**3** Optimize staff and asset utilization
- 4** Health & Safety compliance

**5** Quantifiable quality control

**6** Paperless solution



I recommend Coretex because the solution has proven to be a reliable provider of real-time information that supports efficient operations and safely protects the integrity of our customers' cold chain.

**TED PRINCE**  
CO-FOUNDER AND COO  
**TIGER COOL EXPRESS**



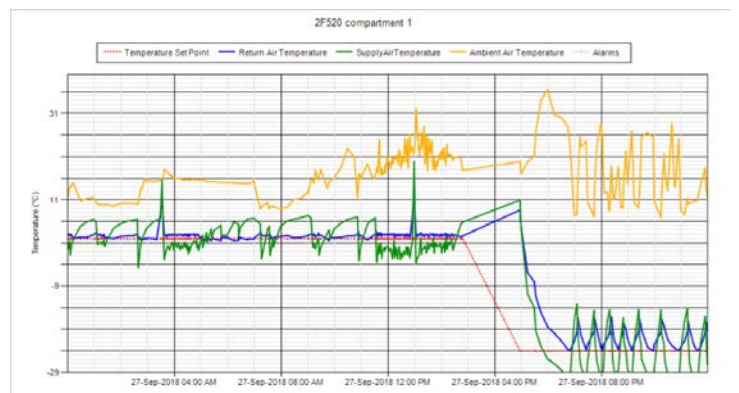
733 Connections with Coretex



- Live Tracking
- Remote Management
- Replay
- Geofencing
- Fleet Management
- Advanced Alerting
- Reports & Dashboards
- Engine Management

## Coretex Platform

Coretex is the essential platform for dispatchers, safety teams, maintenance teams and plant managers to get the best out of every aspect of a fleet operation.



## Coretex Mobile App

See your vehicles whenever, wherever with the Coretex mobile app. See their latest movements and send them messages, connecting with Coretex Drive. Available on Android and iOS.



## TMU1500

TMU1500 is our premium device offering. With built in engine management, 3-axis accelerometer and on-device geofences, you'll never miss an event.

